



# West End News

Volume 2007, Issue 4  
December 2007/January 2008

**We're on the Web!**  
**westend.org**

## General Meeting

December 11, 2007  
7 p.m. – United Methodist Church

### Agenda

HARTFORD'S POLICE  
DISPATCH SYSTEM

THE WEST END'S STRATEGIC  
PLAN – WHAT SHOULD BE OUR  
PRIORITIES?

PROPERTY TAX REFORM -  
IDEAS FOR REFORMING THE  
SYSTEM

COMMITTEE REPORTS  
ARCHITECTURE HISTORY  
& RESOURCES  
EDUCATION  
HOUSING  
PUBLIC SAFETY  
ZONING

MEMBERSHIP

HONORING STUDENTS ON THE  
HONOR ROLL AT OUR  
NEIGHBORHOOD SCHOOLS

ANNOUNCEMENTS

## Message from the President

Greetings

At the December general meeting, we want to hear what you think should be the priorities for improving the West End. The meeting is on Tuesday, Dec. 11, at 7 p.m. at the United Methodist Church (corner of South Whitney Street and Farmington Avenue).

In 2001 we completed a strategic plan that is available on the web at <http://www.hartford2000.org/Plans/Westend/default.htm>. Some of the items from the plan have been accomplished. We have a community center. Noah Webster has been renovated. We have a community services police officer. Some of our streets have speed tables to slow traffic.

But there is more that needs to be done, and now it is time to update the plan. Stephanie Woodlock, a Tremont Street resident, has volunteered to chair a task force to complete the update.

We need to hear from all of you about what our priorities should be. The plan covers all aspects of our community – housing, employment, education, recreation, youth activities, seniors, business development, historic preservation, etc. How we set priorities is up to us.

Please come to the general meeting to talk with us. If you have a conflict, contact me ([dbarrett@hartsem.edu](mailto:dbarrett@hartsem.edu) or (860) 509-9519) and share your ideas.

Also on the agenda is a discussion of property tax reform. I serve on the city's Property Tax Reform Task Force. Property tax reform will affect all of us, whether we are a homeowner, a tenant or a business owner. Come to the meeting to hear what the task force may recommend and provide feedback.

This is your neighborhood – get involved. Our committee chairs will report on what their committees are working on, and I hope all of you will participate on one or more of the committees. The old adage that there is strength in numbers holds true when it comes to achieving change in the West End.

Join us at the church for this meeting, whether you are a member of WECA or not. Join your neighbors and share your thoughts. Together we can make the West End a better place to live, work, shop, and stroll. See you on December 11.

David Barrett  
President

## Dine Around the West End on January 26th

**"One cannot think well, love well, sleep well, if one has not dined well." - Virginia Woolf**

Mark your calendars to chase away mid-winter blahs, West End-style, at **Dine Around the West End**, the fourth annual progressive dinner to benefit WECA on Saturday evening, January 26, 2008.

The evening, which has come to be eagerly anticipated in the neighborhood, starts at 6 p.m. at the home of Annelieke and Peter Schauer, 1020 Prospect Avenue. Approximately 150 guests will enjoy wine and hors d'oeuvres and receive their dinner assignments. From there they depart for dinner at one of twenty-one West End homes. Beginning at 10:00 pm, dessert and coffee will be offered to guests at the home of Suzanne and Michael Buenaventura at 47 Scarborough Street.

**Dine Around the West End** is an evening of warmth, festivity & conviviality. The night is full of surprises – where you dine, the menu served, and your dinner companions!

*(Continued on page 4)*



## West End News

### WECA Calendar December 2007/January 2008

#### Dec. 4, Jan. 8

Board meeting, 7 pm, West End Community Center (WECC)

#### Dec. 11

General Meeting, 7 pm, United Methodist Church, 571 Farmington Avenue

#### Dec. 3, Jan.7 Education

Chair: Sylvia Reid, [expressyourself1@gmail.com](mailto:expressyourself1@gmail.com), 539-1552.

Meets first Monday of the month, 6 pm, WECC.

#### Dec. 10, Jan. 14 Architectural History & Resources

Co-chairs: Jan Klein, [jacefk@comcast.net](mailto:jacefk@comcast.net), 232-2050  
Jeff Jahnke, [jwj@jahnkearchitecture.com](mailto:jwj@jahnkearchitecture.com), 523-4088.

Meets second Monday of the month, 6 pm. Topic & location TBA, contact Jan or Jeff for information.

#### Dec. 17, Jan. 21 Housing

Co-chairs: Sonia Ayala, [soniaa0924@aol.com](mailto:soniaa0924@aol.com), 233-2980.

Ed Karban, [ekarb@aol.com](mailto:ekarb@aol.com), 525-7446.

Meets third Monday of month, 6 pm, WECC, continuing discussion of sale of Clemens Place.

#### Jan. 24 Public Safety

Chair: Dave Jorgensen, [Jorgie54@comcast.net](mailto:Jorgie54@comcast.net), 670-5454.

Meets third Thursday of month, 7 pm, WECC. No meeting in December.



## WECA Utilities Task Force

In 2008, the MDC will develop the design details of West End sewer system separations for construction work that will take place in ~ 2009 –2010 as part of the MDC Clean Water Project (for more info see <http://thecleanwaterproject.com/>). New separated sewer lines will be installed directly to houses throughout the West End. This construction work is a rare opportunity to accomplish other infrastructure improvements, such as burying telephone and electrical lines; adding cable/high-speed internet lines; installing energy efficient street lighting with historic gaslight characteristics along with streetscape improvements – such as sidewalk repairs.

While it makes sense to dovetail other infrastructure improvements with the MDC construction work, the neighborhood will have to figure out how to convince the utilities to work with the MDC construction process, and help identify supplemental funding sources. This will be the topic of the first meeting of the WECA Utilities Task Force, which will be held at 6:30pm on Monday, December 3rd at Hartford Seminary, 77 Sherman Street.

Note that we welcome the participation of persons who might not available for the regular Utilities Task Force meetings, yet who have specific skill sets that can assist in the process –especially professionals (lawyers, engineers, financial managers, . . .) with specialized expertise in utilities infrastructure improvements. Please contact David Barrett (860) 509-9519 or [dbarrett@hartsem.edu](mailto:dbarrett@hartsem.edu) if you are interested in the WECA Utilities Task Force.

## WECA's Education Committee needs your input!



The West End Civic Association is planning a special program on education in Hartford for the general meeting on February 12. We plan to ask Board of Education and school officials to meet with us to discuss their plans for the school system.

Our focus will be on Noah Webster and Hartford Public High School but we want to touch on all the educational opportunities for the students who live in the West End.

Some of the questions we have are:

What are the plans for Hartford Public? Will it be divided into academies?

How will Noah Webster guarantee slots for West End students?

What programs are planned to increase the opportunities for city students to attend schools in other communities?

And we want to know from you what changes you would like the schools, and the school system, to make.

We know that there are many questions on your minds. We would like you to send them to us so we can prepare for this meeting. Contact Sylvia Reid, Education Committee chair, at [expressyourself1@gmail.com](mailto:expressyourself1@gmail.com) or (860) 539-1552.

## Volume 2007, Issue 4

### December events, happenings and volunteer opportunities

### Honoring Honor Roll Students

#### \*\*\* VOLUNTEERS NEEDED TO WINTER PROTECT THE ROSE GARDEN \*\*\*

Due to illness and cut backs in staffing, the Foreman of Elizabeth Park is asking for assistance in winter protecting the roses. The date is Saturday, December 1, 2007 at 9:00 a.m. In case of rain or inclement weather, the volunteer day will be postponed until the following Saturday, December 8, 2007.

Please bring your own shovels and gloves. The entire garden needs to be hilled before winter so if it is not finished in one day (pipe dream) the park can use your help the following week until the garden is completely hilled.

Winter protection is contingent upon the weather. If it stays relatively warm, and the roses are not yet dormant, the hilling will have to be postponed. The Friends of Elizabeth Park and the City of Hartford hope you can give a few hours of your time. The Rose Garden was particularly lovely this year. Let's hope we can help it to winter well so we can enjoy another lovely year.



Donna Fuss, Rosarian

[www.elizabethpark.org/winter-volunteers.htm](http://www.elizabethpark.org/winter-volunteers.htm)

#### IMMANUEL CONGREGATIONAL CHURCH

10 WOODLAND STREET  
HARTFORD, CT 06105-2301  
527-8121  
[www.iccucc.org](http://www.iccucc.org)

#### Festival of Lessons and Carols

**December 2 4:00PM**

The Nativity story told in scripture, familiar carols, and anthems of the season featuring the Chancel Choir, soloists, and organ. Dinner (\$5) follows the Festival. Seating is limited to 175. **Reservations are required.**

#### Sleigh Bells Ring! Immanuel Sings!

**December 9 2:00-5:00PM**

Christmas carols and refreshments in Fellowship Hall, table tennis in the stage room and caroling throughout the neighborhood in horse drawn carriages.

#### Christmas Pageant

**December 16 10:00AM**

This drama for children, youth and adults is an annual favorite. Music of the season complements the story.

#### Christmas Eve Service of Worship

**5:00 PM**

WECA and Hartford Metropolitan Youth Choir are sponsoring a Holiday Celebration "**Honoring Honor Roll Students**" from HPHS, U High of Science and Engineering, 8th grade and up from Classical Magnet and Noah Webster.

We want to encourage those students who are on the road to success to keep up the good work, and to know that the community will support students who desire to succeed.

The event is scheduled for Saturday Dec. 15, 2007 12:00 Noon until 3:00 at the Village for Children and Families on Albany Avenue. RSVP by Dec. 8. Invited students must bring a parent or guardian with them.

Monetary donations or gifts for 13 year olds and up are most welcomed. Volunteers are needed to help serve food, to help wrap gifts, and to contact businesses to assist us with this worthy effort. Please call Sylvia Reid, 860-539-1552 for reservations and to make tax deductible donations.

### Now showing at Hartford Children's Theatre...

Tickets are now on sale for the next production in the Lincoln Financial MainStage Season at Hartford Children's Theatre! Generations of young readers have cherished the spirited adventures of the *Boxcar Children*, and now the story comes to life on stage. Orphaned and in danger of being sent to different foster homes, the four siblings run away and make their home in an abandoned railroad boxcar. The children discover the rewards and perils of life on the run, as well as the joy of keeping their family together. *The Boxcar Children* will be presented November 30th through December 13th at the Carriage House Theatre at 360 Farmington Avenue. Tickets are \$16 for adults and \$13 for children 13 and under. Please call 860-249-7970 ext. 16 Monday through Friday between 10AM and 4PM for tickets.

The Hartford Children's Theatre is located at 360 Farmington Avenue, Hartford, CT. Phone: 249-7970. Web:

[www.hartfordchildrenstheatre.org](http://www.hartfordchildrenstheatre.org)

### New Advertising Opportunity

Advertise your business in the West End News

\$100 buys a business-card-sized ad

Reach all households in the West End (more than 3,000 homes and apartments) through door-to-door delivery

Published five times a year – every other month starting in September

To place an ad, contact Jill Donan, newsletter editor, at [wecanews@yahoo.com](mailto:wecanews@yahoo.com) or David Barrett at (860) 509-9519

(Continued from page 1)

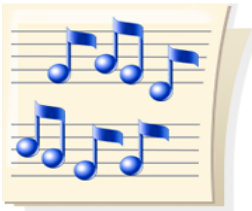
### Dine Around the West End

"Along with being a fun fundraiser, this is a great way for neighbors to get acquainted and reunited with new and long-time residents in their own neighborhood," says David Barrett, President of WECA. "In previous years we had scores of people tell us about meeting people for the first time although they've lived in the West End for years."

"We're so fortunate that so many in our neighborhood support this evening in so many ways," says Jan Klein, co-chair for the event. "In addition to our gracious hosts, our sponsors at all levels really make this event possible. For the fourth year in a row, the generosity of our two Platinum Candelabra sponsors has been incredible: again, Galo Rodriguez of The Village for Families and Children will donate all of our fabulous hors d'oeuvres, and Louis Lista of Pond House Café will provide all of the luscious desserts." Also, at print time, Gold Charger sponsors include DeVars-Phillips Florists, Mollie Abend, West End Realtor, Oxford Builders - Christian & Kate Winkley and the law offices of Berman, Bourns, Aaron & Dembo. Silver Tray sponsors include FedexKinko's Print & Copy Center & Murati's Home Improvement. Crystal Flute sponsors include JAPANALIA ON ONE/ Ga11ery eleven, Churrascaria Braza and the law offices of Miller & Zlokower.

"Every year, this event has sold out within about two weeks," adds Fi Bookwalter, co-chairing the event with Jan Klein. "We cannot take telephone reservations, so it's important to understand that the way to secure your spot is BY GETTING YOUR REPLY CARD AND CHECK RETURNED promptly after receiving your invitation in the mail."

Admission is \$75 per person. Invitations will be mailed to WECA members and West End neighbors by December 7<sup>th</sup>. If you have not received yours by December 10, or need more information, call co-chairs Jan Klein at 232-2050 or Fi Bookwalter at 232-8705.



### Free concert

The Parkville Classics will present The Avery Ensemble in a free concert featuring the music of Bach, Eisler, and Ravel on Feb. 2, 2008 at Grace Episcopal Church, 55 New Park Ave. Hartford at 7:30 PM. A reception follows to greet the musicians.

For more information:  
Ellen Morse  
860-649-6192

Not a member of WECA? Join today!



### Enrollment Form



Please complete form to become a member. Please print clearly.

Name(s) \_\_\_\_\_

Home Address \_\_\_\_\_ Apt. # \_\_\_\_\_

Phone (day) \_\_\_\_\_ Evening \_\_\_\_\_

Email Address \_\_\_\_\_

WECA makes your neighborhood better, but we need your help

WECA is a 501 (c) (3) organization and contributions are tax deductible. Please check contribution level.

\_\_\_ \$1,000 \_\_\_ \$500 \_\_\_ \$250 \_\_\_ \$100 \_\_\_ Volunteer

\_\_\_ \$50 \_\_\_ \$25 \_\_\_ \$10 \_\_\_ Other

Please return completed form to:

WECA, c/o David Barrett, 257 Oxford Street, Hartford, CT 06105

